

The upper limbs

The Islamic University College of Medical Technologies

Department of Radiology Technologies

First Stage

Lecture two: The Upper Limbs

MSc. Tariq Mohammed Alshybany / MSc. Mohammed. K. S . Alquraishi

MSc.Ali Alruazik



Themes of the lecture:-

- 1- Introduction to upper limbs.
- 2- Pectoral Girdle.
- 3- Articulations of Clavicle.

The purpose of the lecture:-

(Introducing the student to the upper limbs and muscles of upper limbs)

Behavior Objectives:-

- 1- To know the definition of the upper limbs.
- 2- In order for the student to learn the details of upper limbs.
- 3- The student should be able to know scientific names of upper limbs.
- 4- The student be able to differentiate bones of the upper limbs

References of the lecture:-

<https://books.google.iq/books?id=aK52DwAAQBAJ&printsec=frontcover&d>

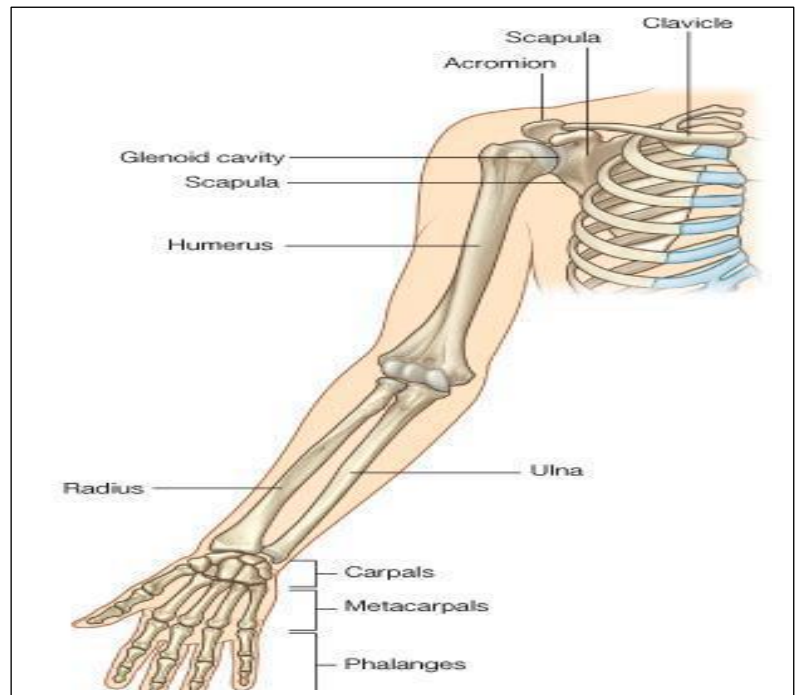
[q=general+anatomy+book+pdf&hl=ar&sa=X&redir_esc=y#v=onepage&q&f=false](https://books.google.iq/books?id=aK52DwAAQBAJ&printsec=frontcover&d)

<https://books.google.iq/books?id=6bZEDwAAQBAJ&printsec=frontcover&d>

[q=general+anatomy+book+pdf&hl=ar&sa=X&redir_esc=y#v=onepage&q&f=false](https://books.google.iq/books?id=6bZEDwAAQBAJ&printsec=frontcover&d)

The Bones of UL are:

- Pectoral Girdle.
- Arm : Humerus.
- Forearm : Radius & Ulna.
- Wrist : Carpal bones
- Hand: Metacarpals & Phalanges

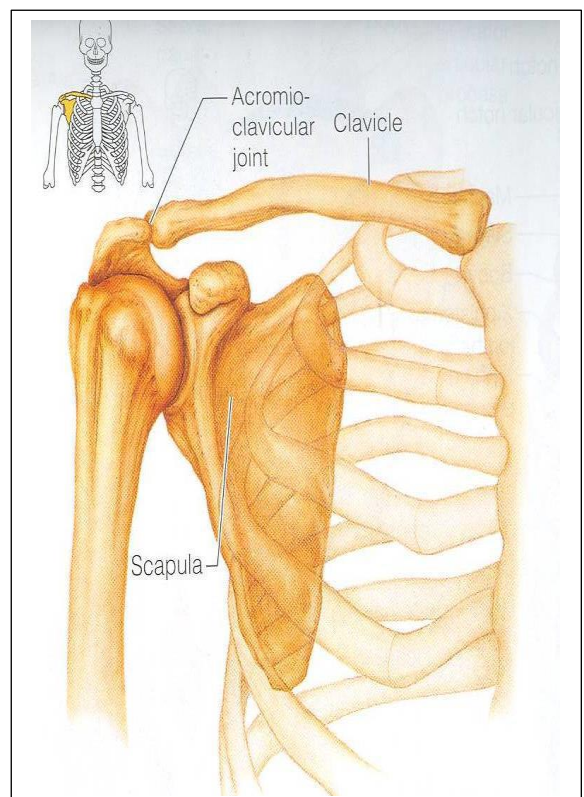


Pectoral girdle

*Formed of Two Bones:

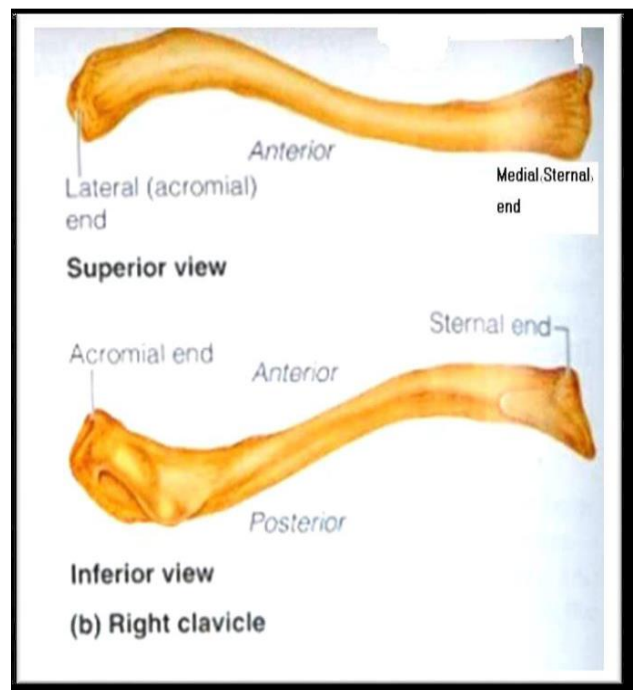
*Clavicle (anteriorly) and Scapula (posteriorly).

*It is very light and allows the upper limb to have exceptionally free movement.



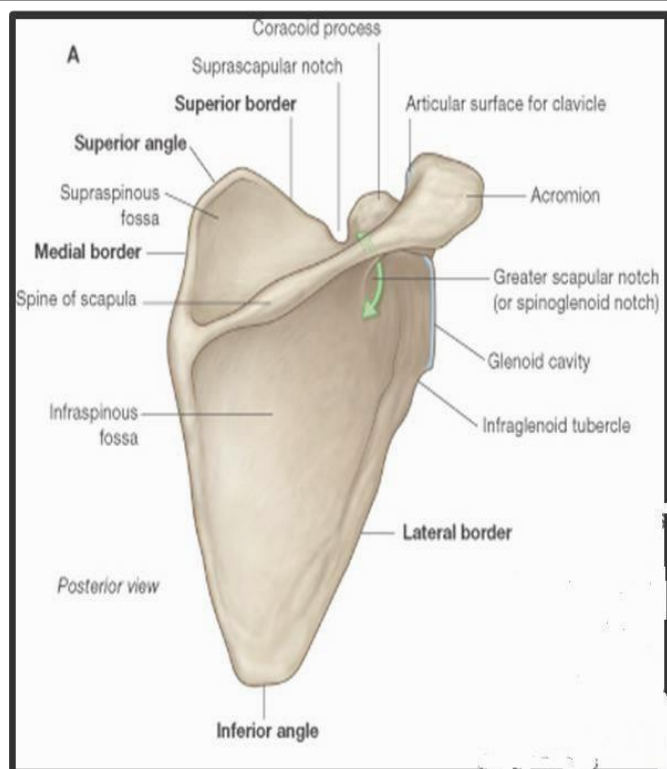
Clavicle

- It is a long bone with no medullary cavity.
- It has the appearance of an elongated letter Capital (S) lying on one side.
- It has Two Ends:
 1. **Medial (Sternal): enlarged & triangular.**
 2. **Lateral (Acromial): flattened.**



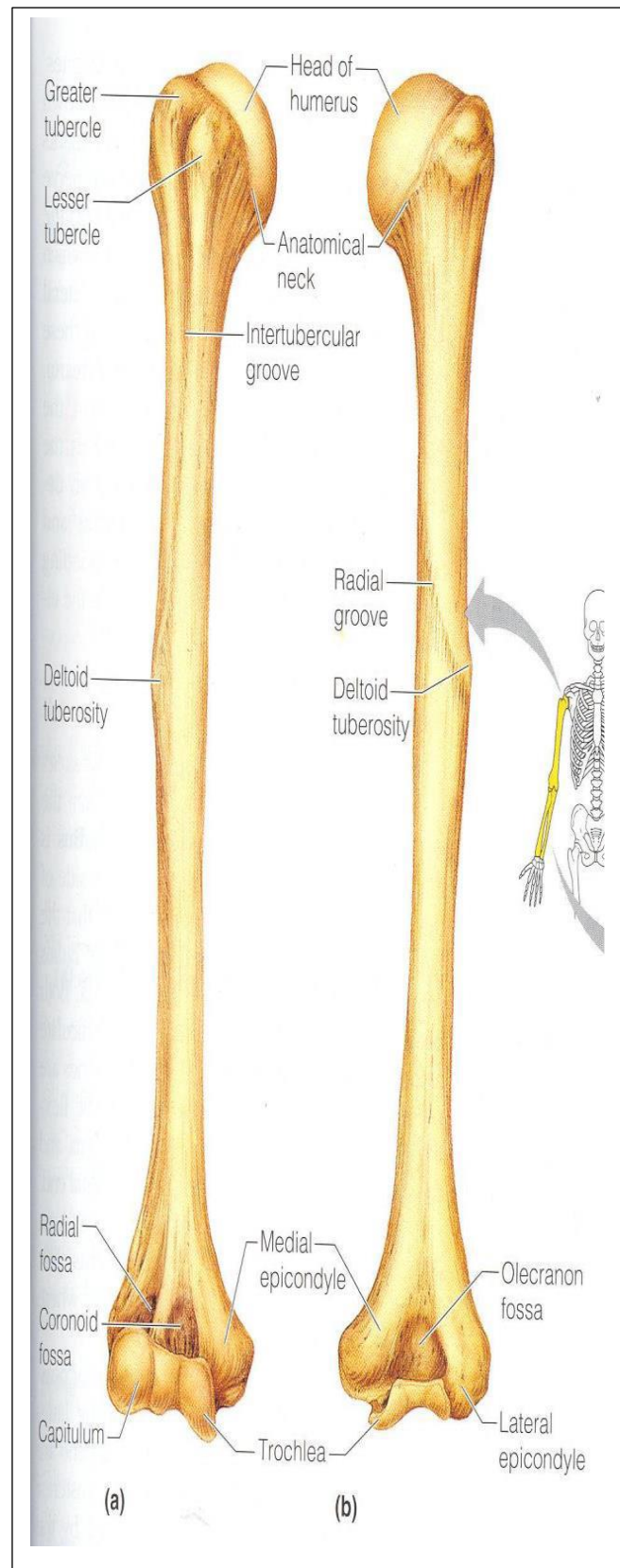
SCAPULA

- It is a triangular Flat bone.
- *Extends between the 2nd _ 7th ribs.
 - *It has :
 - *Three Processes:
 - *(1)Spine
 - *(2) Acromion
 - *(3) Coracoid



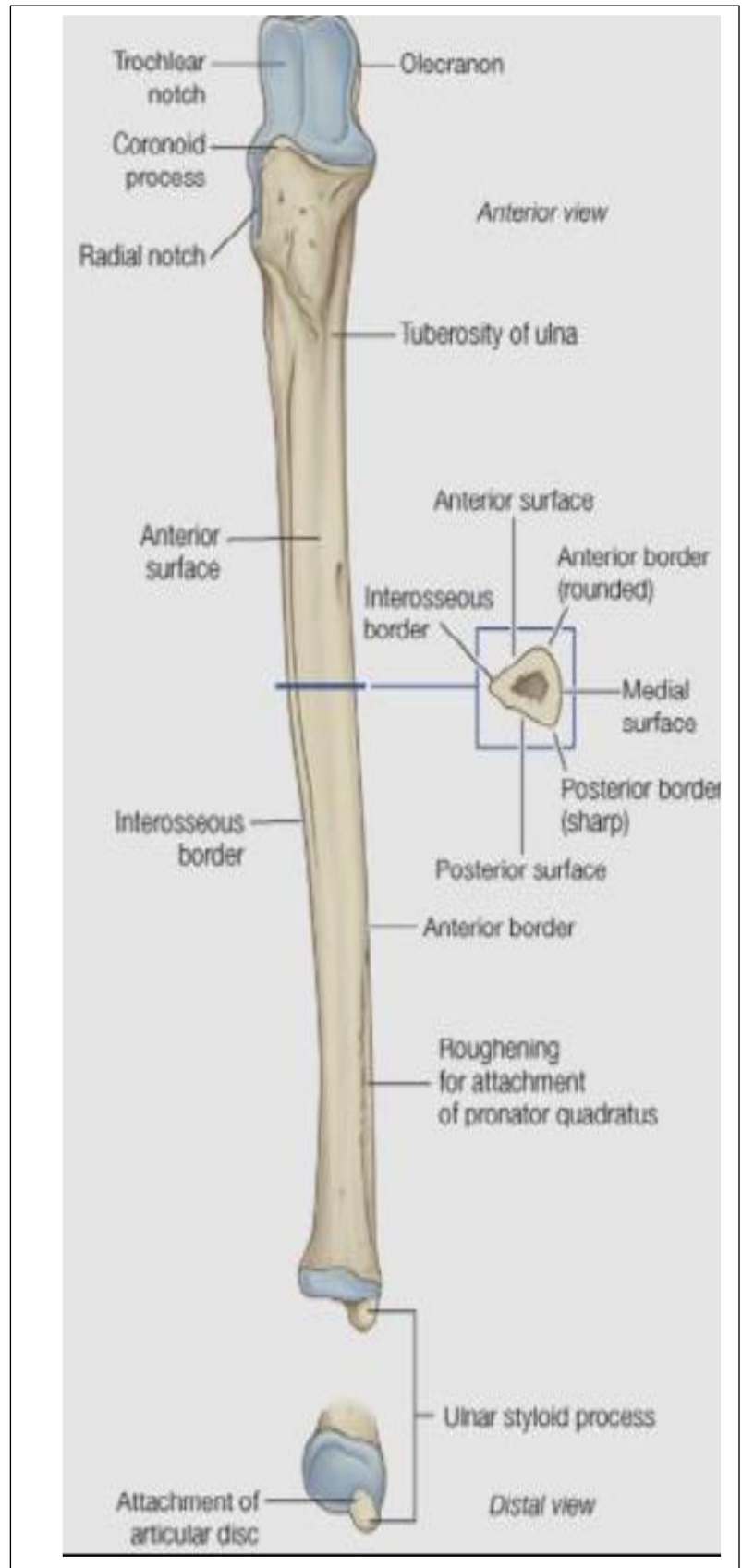
HUMERUS

- *A typical Long bone.
- *It is the largest bone in the Upper limbs
- ***Proximal End** : contains
 - *Head, Neck, Greater & Lesser Tubercles.
- * **distal end**: contains
 - 1- trochlea (medial) for articulation with the ulna.
 - 2- capitulum(lateral): for articulation with the radius



Ulna

It is the stabilizing bone of the forearm.
It is the medial & longer of the two bones of the forearm.



radius

It is the shorter and lateral of the two forearm bones.

Proximal End:

1. Head: small & circular

Its upper surface is concave for articulation with the Capitulum.

2. Neck.

3. Radial (Bicipital)

Tuberosity:

Shaft: It gradually enlarges as it passes

